

Historic Building
Central London

Lifts Designed, Supplied & Installed



Total Project Time:
52 Weeks



Our People:
**Consultant
Project Manager
2 x Engineers**

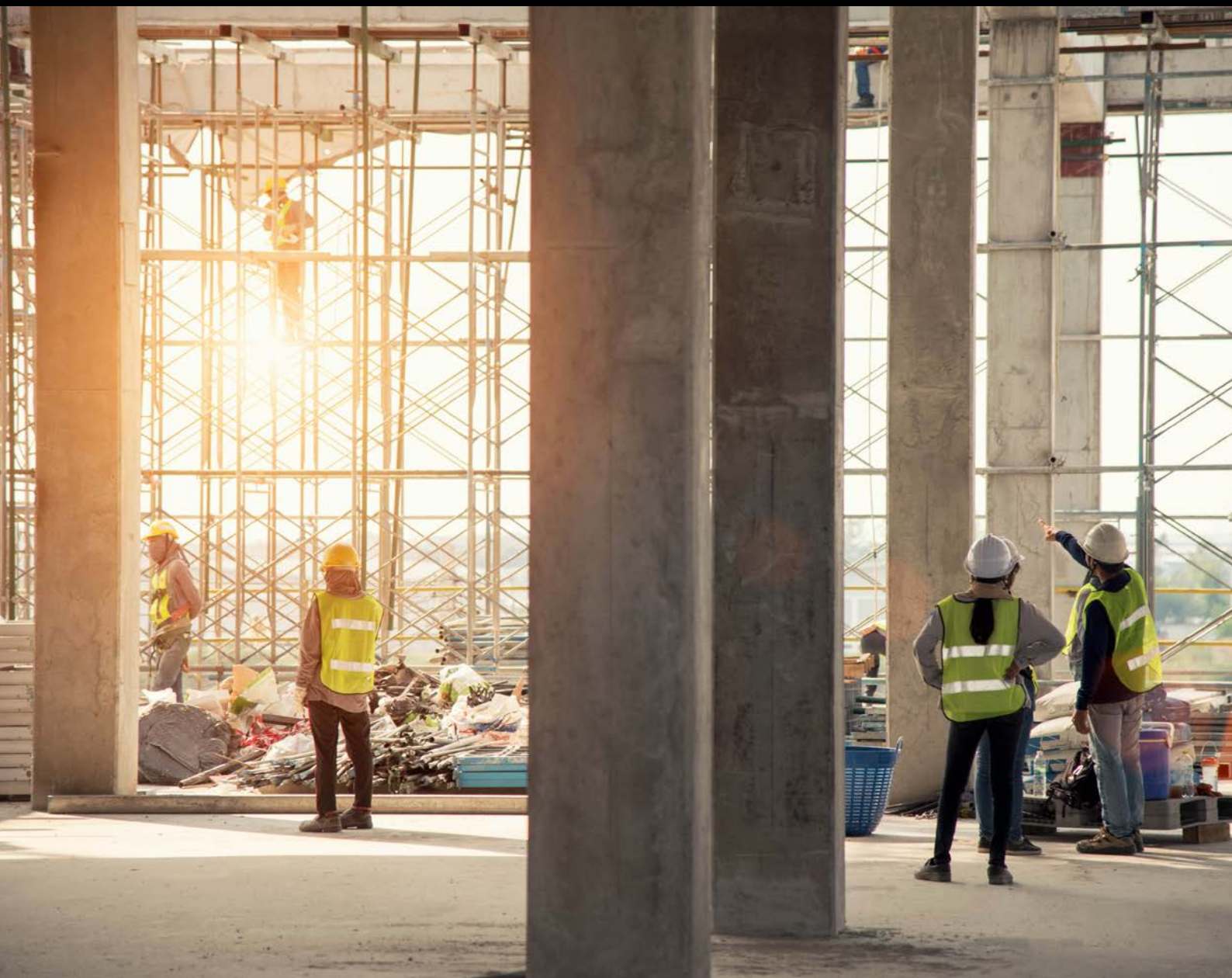


Installation Time:
15 Weeks



OUR CLIENT

SOPHISTICATED LIFT THINKING



iKONIC Lifts was included in a tender for a significant development of a historic building in central London by a large London-based contractor who was partnering with the architect for whom we had previously provided lifts.

Two luxury finished passenger lifts were necessary for the client, one serving 5 floors and the other serving 7 floors, along with solutions for goods transportation to a basement and a service lift for food and silver service. As part of our services, we specified, supplied, and installed this equipment for our clients.

iKONIC CHALLENGE

SOPHISTICATED LIFT THINKING



In this project, we had to be quite flexible due to several delays caused by covid and construction team challenges they faced. This meant that we had to stop and start work ourselves at times. This caused the project to be delayed for long periods at a time, resulting in us having to store the lift equipment for them.

Following our expert's survey, and after the product had been manufactured, there were some other construction issues, the result of which was that new concrete cores were required.

Our team was notified. This meant that equipment for the lift projects would not fit the updated cores. Our experts began collaborating with the construction team to resolve the problem.

We also overcame delivery issues in central London due to the high traffic volume.

Furthermore, there were no telephone lines in the building for the lift autodialer.

iKONIC SOLUTION

SOPHISTICATED LIFT THINKING



In our building accessibility specifications, our VT engineers specified products that used leading industry components to provide open protocol systems for the lifts. Which were, two MRL, 1000kg, 13 person lifts utilizing iKONIC Mars Passenger Lifts. iKONICs Goods-Only Passenger Lift for basement goods storage.

We supplied 100kg iKONIC dumb waiters to provide silver service to the kitchens across four floors of the building. Due to the challenges mentioned we stored our clients' lift products. Then we worked with the construction team to avoid any further delays and a safe installation of the products, using our knowledge from working on more complex projects.

Our team resolved the challenge of the updated passenger lift core, by redesigning the lift doors.

Which would allow the equipment to fit the new sizes, so we could still accommodate a 13-person lift. By designing doors with a slimmer profile. Our team provided luxury interior finishes to match the specified design. Working with the contractor using an existing space we instructed works that could be carried out to ensure the new goods lift could be installed, successfully.

We conducted a traffic analysis for our clients to ensure all requirements were met.

VOIP was used to connect the passenger lift auto-diallers since there were no phone lines available in the building. Thus, making the building future-proof for the upcoming digital switchover, when analogue lines will no longer function.

iKONIC RESULTS

SOPHISTICATED LIFT THINKING



iKONIC Lifts was responsible for the design and supply of all five lifts, which were installed successfully with proper fit, form, and function. We completed our brief within their new timescales and provided a flexible and supportive service for all the challenges they faced.

Passenger lifts tested and achieved the necessary standards of BS EN 81-20/50, BS EN 81-28, BS EN 81-73, and BS EN 81-58. We also achieved **BREEAM** credits for the lifts we installed for our clients. Providing efficient, luxury finished lifts with a superior user experience.

Features Bespoke Lighting, Suede luxury material for the lift car finishes, Brushed Brass Control Panels and Matching Handrails, Brass Sills, Timber Lift Car Frames, and lastly matching carpets to the landing floors.

Goods Only lift installation was completed smoothly with the building works we recommended and the installation of the two dumb waiters.

All iKONIC Goods Only Lifts comply with the European Standard EN81-31:2010 – Category A. This is seen as the most suitable way for a goods lift to achieve compliance with European Machinery Directive 2006/42/EC.

With all testing completed and handed over on time for the completion of the building.

Our client was impressed with our response and service in general. They asked our lift service division to take over the lift maintenance contracts on all the lifts.