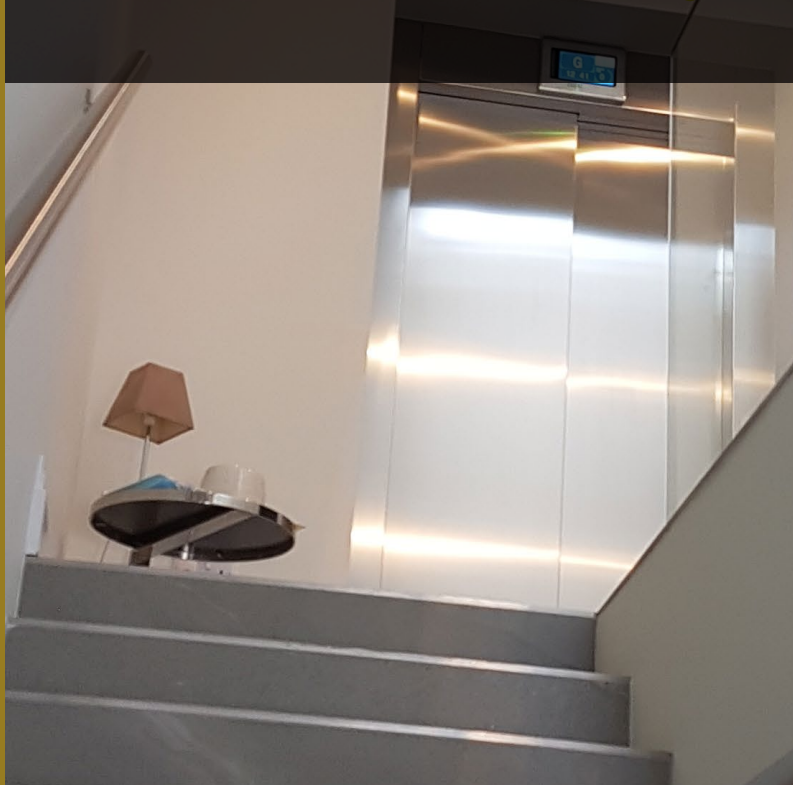


APARTMENT LIFT SOLUTION  
MILLWAY NORTH LONDON



Three Storey Building Lift Solution  
**SERVING SIX APARTMENTS**



Total Project Time:  
**11 Weeks**



Our People:  
**Sales Manager**  
**Project Manager**  
**2 x Engineers**



Installation Time:  
**2.5 Weeks**



# OUR CLIENT



## NEW BUILD MILLWAY LONDON

Millway is a new build property in North London. The project was for the development of a three-storey building serving six new apartments.

On this project we were working directly with the building developer who came to iKONIC through recommendation.





# IKONIC CHALLENGE

## SOPHISTICATED LIFT THINKING

This project didn't have many challenges due to being new build development so the lift shaft was purpose built to accept the lift proposed by iKONIC.

The only challenge we had was the position of the lift controller which the client wanted positioned opposite the ground floor doors which caused an issue with how we get the cables into the shaft.

It was decided that we would have a channel created under the floor so the cables could be routed safely to the lift controller.



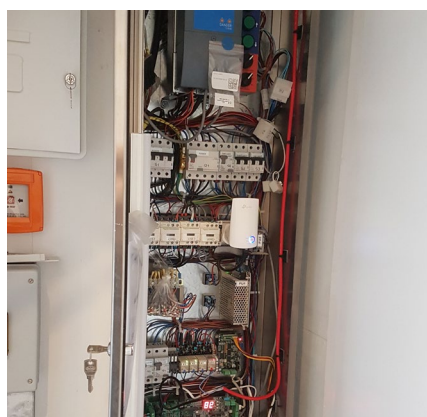
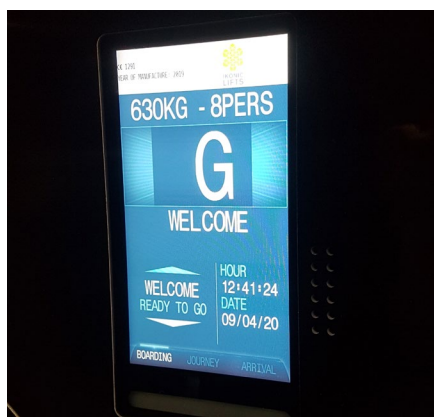




# IKONIC SOLUTION



SOPHISTICATED LIFT THINKING



The passenger lift solution that iKONIC chose was perfect for the application as this product could operate perfectly for the required application.

The installation was carried out by our factory trained engineers.

The product chosen was particularly appealing to the client due to its energy efficiency having vary-speed, standby mode and being designed and built in compliance with ISO 14001.



# IKONIC RESULTS

SOPHISTICATED LIFT THINKING



With the lift installation completed and handed over to the client on time for the buildings completion and building control inspection.

The lift has now given easy access to all floors and making the properties more marketable. iKONIC are now looking forward to the next project with the client.

